

## Gene "Titanic Style" 1998 Collection



Moroccan Nights

Moroccan Nights and Belle Epochue designs are influenced by the Titanic times.

Moroccan Nights. Not Available.



Belle Epochal

With Mel Odom. Belle's set includes a hand-beaded evening gown, bandeaux, purse and necklace.

Edition of 2/5. Not Available.



Morning Walk on the Deck  
and Titanic Suit

Morning Walk on the Deck and  
Titanic Suit designs relate to 1912.  
Morning Walk on the Deck - 1/11.  
Titanic Suit - 1/10. Not Available.

Ready To Depart and  
Titanic Suit

Ready To Depart and Titanic Suit  
both are Titanic style.  
Ready To Depart - 1/9. Not Available.



Black Stripe Magic

Black Stripe Magic is a distinctive  
sample of pre-revolutionary time. Set  
includes B&W striped skirt and black  
silk top with velvet hem finishing. It  
has a dusky pink silk lining on top  
and same shaded long scarf on the  
back. Black Stripe Magic comes with  
a hat.  
Edition of 1/3. Not Available.

### Black Stripe Magic

Black Stripe Magic is a distinctive sample of pre-revolutionary time. Set includes B&W striped skirt and black silk top with velvet hem finishing. It has a dusky pink silk lining on top and same shaded long scarf on the back. Black Stripe Magic comes with a hat.

Edition of 1/3. Not Available.

### Parisian Dots

This costume reflects the fashion of the turn of our century. Set includes navy blue dotted silk de soie skirt flared out below the knees and reaching the ground, short jacket with tight sleeves, transparent silk blouse, wide belt, purse and hat.

Edition of 1/3. Not Available.



### Red Bird

This outfit is also inspired by the fashion of the 1900's. Red Bird consists of scarlet godet silhouette skirt decorated with bias navy blue and white trim, navy blue crepe short jacket sloped lower in front, large navy hat with exaggerated deep red bird and chiffon finished with white lace collar and cuffs.

Edition of 1/2. Not Available.



Umber Plum

Umber Plum is inspired by the Titanic time's fashion. This gown is composed of two layered chiffon and silk evening gown, decorated with French embroidery and hand-beaded antique gold beads of the same shade. Umber Plum comes with gloves, bandeaux, necklace and large Russian mink stole. Edition of 1/2. Not Available.



Magenta Orchide

This set reflects the original silhouette of the turn of our century. Magenta Orchide includes spiral designed skirt, short jacket made of antique Crepe de Satin, silk blouse, navy velvet belt and extremely large hat, typical to the time. Edition of 1/3. Not Available.



Red Cascade

This gown is a very special design. Kimono cut consisting of two silk and chiffon layers with upper layer of chiffon hand painted and hand beaded batik. Set includes gown, bandeaux and necklace. Edition of 5, 2 blue, 2 scarlet, 1 umber. Not Available.

## Gene "Winter Parties" 1998 Collection



Christmas Eve

Influenced by the fashion of 40s. Set includes hand beaded silk velvet coat with silk printed lining, Parisian silk hand-beaded evening gown with embroidered and hand beaded chiffon tunic, purse, hat, necklace, bracelet, earring. Not Available.



Bronze Streams

Influence of the 30s. Bronze Streams includes silk chiffon triangle shaped skirt, hand-beaded bronze thread tunic with hand-beaded French embroidery, velvet coat with Russian mink collar, purse, gloves, bronze knitted hat, necklace, bracelet, earrings. Dark Coffee Brown, 3/3. Not Available.



This set's influence comes from the fashion of 50s. Nieves includes Parisian creep evening gown with chiffon panels, hand beaded rainbow glossy beads, crystals and crystal drops, mink stole, earrings, bracelet and necklace. Snow white 1/1. Off-white 1/1. Ecu 1/2. Not Available.



Black Rose's Design was influenced by the fashion of 40s. Set includes 4 bias paneled silver dress from silk with metallic thread, hand beaded black silk and silver embroidered wrap with silver mink collar, purse, long gloves, bracelet, earrings, necklace and hat. Edition of 3/3. Not available.



Influence of the 50s. Turquoise Wonder includes a silk gown with metallic thread tunic, silk chiffon floating skirt, hand-beaded by old gold colored and glossy rainbow beads, mink wrap with silk lining and silk bow, purse, hat, gold long gloves, necklace and earrings. Edition of 2/2. Not Available.

## Gene Collection of 1999- 18th Century & beginning of 20th Century



Madame de Pompadour

This set resembles fashion of the middle 18'th century. Madame de Pompadour includes swampy green velvet open robe with two panniers, two pink and ecru silk skirts with gobelein deco', petticoat, wig, purse, earrings, necklace, bracelet. Robe is decorated with silk ribbon bows (echelles).

Edition of 1/2. Not Available.



A Visit to Claude Monet

This set's inspiration comes from Impressionist paintings, Monet in particular. Set includes draped skirt with train, jacket, lacy petticoat and blouse, hat, silver earrings and purse. Set is made from silk Peau de Soie.

Edition of 3. Not Available.



Weldon's

This gown was influenced by one of the biggest names in Fashion Redfern, 19th century. Weldon's is designed to contrast of pale pink watered velvet and swampy green satin silk. Set includes skirt, jacket, blouse, purse, black velvet bowl necklace. Edition of 3. Not Available.



Bon Ton, 1914

Bon Ton includes jacket and skirt with glossy and matte silk, blouse with a tiny spray of flowers, hat, silver earrings, purse and an ostrich boa. Decorated with tiny pearl buttons. Edition of 2. Not Available.



Spring of 1914,  
Birmingham, England

This set includes draped skirt and a jacket from flannel, silk blouse with lacy collar, silk decorated muff from Russian dark mink, purse, hat and beaded gloves. Edition of 3. Not Available.





Robes de style, Oriental  
Motives and Peacock

Both sets were inspired by the 20's. Oriental Motives includes embroidered and hand-beaded silk dress (Paduasoy), and bias cut silk skirt, hat, bracelet, earrings, long necklace, and belt. Edition of 2. Not Available. Peacock ensemble includes Peau de Soie ornament printed silk dress with two layered skirt from chiffon, hat, purse, belt, gloves, earrings and long necklace. The set is decorated with peacock's feathers. Not Available.



Versailles Gardens

**3rd prize winner at the Santa Fe Art Doll Competition, April, 1999.**

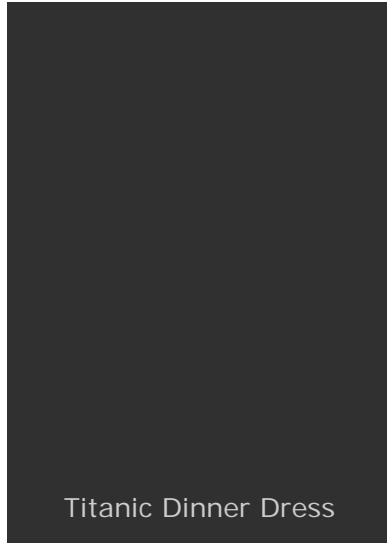
Versailles Gardens includes antique off-white taffeta with floral designs, open robe with two panniers, skirt from antique off-white taffeta, flounced with rosettes and ribbons and a lacy cotton underskirt. Front is held in a tight line by the corset beneath and decorated with layers of frills. Sleeves are half length and delicately edged with lace, extremely high grey wig is built up with plating and entwined with flowers, ribbons and a feather. Ribbon band on the neck, bracelet, earrings, and lacy purse decorated with rainbow crystals, flower bouquet and a feather fan. Edition of 1. Not Available.



Titanic Jump Dress

This gown is a very special order. It's a recreation of the Jump Dress done with maximum precision in Gene's tiny scale. This set includes evening gown from 3 hand beaded layers of fabric; tulle, airy transparent natural chiffon and silk. Top of the dress completely beaded. Also includes purse, gloves, necklace and earrings using real gold beads.

Edition of 4. Not Available.



Titanic Dinner Dress

Titanic Dinning Dress is a second piece from the movie, that I've created with an attempt to reproduce the original with a maximum precision. It consists of an evening gown, salmon pink satin under-dress with matching pure silk lining, double layered transparent tulle top, completely hand beaded with crystals and black and silver tiny beads. Set also includes black satin hand beaded purse, gloves, necklace, earrings and a head decoration.  
Edition

## Gene Collection of 1999



Shakespearean Gene

### Breast Cancer Auction 2000.

Prototype for this Gene is Elizabeth the I from a famous painting of Gheeraerts the Youngest, dating 1592. Coral red used with gold and white was a very popular combination and here the Queen's dress is also embroidered with real silver thread and fully hand-beaded. Gene is repainted, with a natural red-hair detachable wig, the gown consisting of an open antique silk robe in a "bell shape" created with a metal hoop worn round the hips.



Black & White Abstraction

### World War 2 Period. **Black & White Abstraction** won 3d prize at the 4th Annual Gene Convention, 1999.

This elegantly stylish set includes: bias white lined silk gown with a small dotted top, decorated with draped silk scarf with white tiny dots on black background, short crepe satin line opened coat used on mate side with glossy large collar and rich mink cuffs on the short sleeves, b&w dots gloves, purse, petite veiled hat, pearl necklace and earrings.

Edition of 1/3. Not Available.



Dreamscape

Dreamscape is influenced by fashion of 20s, the Jazz age. Set includes: evening gown from chiffon, sky blue taffeta with two floating panels and sky blue floating fringe. Dreamscape is decorated with silk embroidery, hat, purse, ostrich boa, gloves, earrings and necklace.  
Edition 1/2. Not Available.



Meeting with Hemingway

Imagine hot summer day in the 30's, prewar Paris, cozy cafe and Gene sitting with a small cup of espresso, talking with Hemingway, curious crowds of people on the streets.....This set includes sleeveless silk de soie red dress with tiny white dots, short silk lined jacket, wide white gloves, purse, necklace, earrings and of course, necessary at the time stole of mink...  
Edition of 1/2. Not Available.



Purple Romance

Fashion of the 20's, Titanic epoch. Decorated with mink, long jacket and tight fitted skirt, lacy blouse of same shade, purse, hat, earrings and necklace. Pure silk.  
Edition 1/3. Not Available.



Lavender Mink

Again Titanic epoch, Europe of 20s...Set includes silk tight-fitted jacket, hand embroidered, very tight silk skirt, decorated with silver mink, tiny pleated (goffre) organza blouse of same lavender shade, hat, purse, earrings and necklace.

Edition 1/2. Not Available.



Midnight in Rio

A sample from the late 20s. Metallic thread, tight fitting gown with 2 flounces, starting underneath the lower black velvet flounce, which creates a mermaid silhouette. This gown includes evening gown, silk velvet wrap all hand embroidered, decorated with mink, pleated organza hat, gloves, beaded purse jewelry set.

Edition 1/3. Not Available.



Graphica

Influence of the late 30's, when a more varied, more picturesque and more extravagant fashion scene would be impossible to imagine. Graphica includes printed black crepe drooping gown with off-white trimming, O.W. crepe opened coat with black silk embroidery and decorated with fox sleeves, hat, gloves, purse, pearl earrings and necklace.

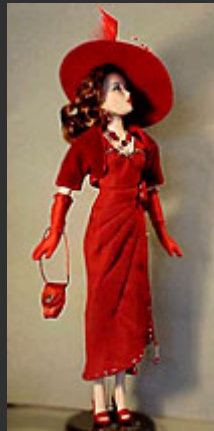
Edition 1/3. Not Available.



Rendezvous

Fashion of the 40's. This set includes silk de soie drapery gown in navy blue on black background with tiny red dots, French silk velvet cape lined with pure navy blue embroidered silk, velvet silk purse, veiled hat, gloves, earrings and lace.

Edition 1/3. Not Available.



Last Tango

Influenced by the late 40's, to be exact-1947. Last Tango includes drapery pure silk beaded gown, beaded French silk velvet bolero, gloves, purse, and hat, rich Russian mink muff with two tails, silver earrings and necklace.

Edition 1/2. Not Available.



Blue-Red Contrast

Early 40's, pre-world war 2. Red-Blue includes bias silk & wool dress, short crepe, pleated lined coat, velvet purse, gloves, veiled hat, necklace and earrings.

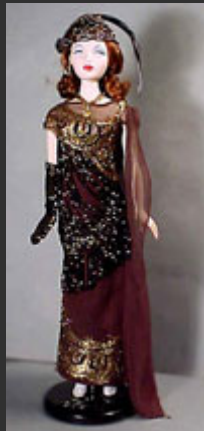
Edition 1/2. Not Available.



Power Of Beauty

Late 40's. Power of beauty is a bias hand beaded stretch silk gown with drapery on the waist in front and on the back, very rich fox stole, velvet purse, veiled hat, beaded gloves, silver necklace, and earrings with real semi-precious stones.

Edition 1/2. Not Available.



Sparkle Bronze

Sparkle Bronze's inspiration is beginning of the 20's - ankle-length, shapeless soft dresses with diagonal line below the hips and usually decorated by fringe and rich embroidery. Set includes evening hand beaded gown, finished with French antique gold embroidery, hand beaded fringe and hand beaded antique silk chiffon scarf's, bronze knitted small fitted hat, purse, gloves, silk velvet wrap with lace clasp, earrings and necklace.

Edition of 1/2. Not Available.



Coral Smile

This gown is influenced by fashion of later 20's, which ignored the bust, hips and waist and concentrated the interest on the hemline, uneven and emphasized by handkerchief points.

This set includes coral colored satin bodice with light chiffon, rich skirt with handkerchief pointed shape. There is a strong diagonal cut-on-the-cross on bodice, line below the hips and panels of chiffon skirt. Hand embroidered with tiny coral and antique gold beads and black crystals. On top, there is a black wrap with a sharp corner tail and high goffre collar, fitting tightly line of the neck and hips. Also includes purse, necklace, bracelet and earrings, gloves and a small hat to complete the image.

Edition of 1/3. Not Available.





Softer Than Rose

Influence of mid 20's. Includes evening gown consisting of a cut-on-the-cross pale pink /ultra mode/ with flared godets, flattered and swayed pink silk satin, skirt, hand beaded with crystals in the same pink shade. Also, set has a triangle shape pure silk wrap finished by silk lace and faux color purse, small close fitting veiled hat, earring and necklace.

Edition of 1/2. Not Available.





Spice

Spice set is influenced by the fashion of the late twenties, when the skirts reached minimum. They began at the hip-line, only covering the knees. This set is cut with bias front panel considerably longer than sides and back. Both lined jacket and the dress are decorated with black fringe. This set includes hand beaded afternoon dress; very low hat, purse, gloves, long string of beads, earrings and black ostrich boa. To complete the 20s image set is shown on Gene with a very characteristic hairdo, when hair was parted on the side, cut into an "Eton" crop. Limited Edition of 1/3. Not Available.



Emerald Wings

This set's influence comes from the Fashion of early 40's. Emerald Wings includes light emerald embroidered organza blouse, deep emerald ballet length fitted high-waisted skirt, wide folded jacket with fox trim, fox detachable collar decorated with flowers, bias cut scarf, hat, gloves, purse, necklace and earrings. Edition of 1/3. Not Available.



This outfit is influenced by the fashion of early 40s. Beige Treasure includes light pinkish-beige crepe bias cut very fitted afternoon dress with draped hand beaded wrap decorated with long mink collar in same hue, small hat with 3 dimensional decoration, purse, stockings and earrings. Edition of 1/4. Not Available.

## Beige Treasure



Variation on Cubism

Fashion of the late 20's, inspired by cubism, reflecting new movement of design, painting, sculpture and architecture. It runs through fashion too, and is expressed through geometrical prints and lines using strong contrasting colors. From the spring of 1924: skirts were short, from near knee-high to ankle length, waists no longer fluctuated, the bust and hips obliterated, the neckline rivaled the low V, all silhouettes were definitely slim. Variation on Cubism set includes pure silk off-white afternoon dress, geometrical design off-white and brown tiny check printed jacket, low sat off-white hat, triangular brown velvet shawl with mink trim, purse, earrings and necklace.

Edition of 1/3. Not Available.



Extravaganza

This outfit reflects fashion of late 30's, and particularly 1938 and was inspired by Claudette Colbert. She was the first Hollywood star to have a department store mannequin created in her likeness while off screen being one of the leading fashion arbiters. Extravaganza set includes chrome green colored crepe silk fitted jacket with antique silver trim and welled buttons, gathered in front of bias panel skirt, veiled extravagant hat, earrings, purse and short on the back and long in front fur cape.

Edition of 1/3. Not Available.



Tea Rose

This set reflects fashion of the late 30's and is inspired by the Hollywood star Joanne Crawford which is mostly remembered from the golden times. This gown is a reproduction of a real photograph with Joanne posing at her home in Brentwood. This set includes crepe de china hand beaded lined sleeveless and tightly fitted on hips and forming a bell shaped skirt with draped back evening gown. Same hue silk wrap, trimmed with fox, lacey purse, lacey gloves, and ostrich decorated hat, matching the fox fur hue, necklace and earrings. All set is designed in a light pinkish brown color. Edition of 1/3. Not Available.



Spring Passion

Spring Passion reflects the fashion of 40's. This gorgeous set includes ultra moda heavy silk bias cut gown consisting of French hand beaded embroidered bodice, bias cut close-fitting skirt with a diagonal mate and shiny stripes and hand beaded draped fringed chiffon of the same color, organza hat, hand beaded purse, gloves, and earrings, necklace and ostrich boa. Edition of 1/3. Not Available.



Domino

Domino is influenced by fashion of 20's, "Vamp" stile. This set includes: lined pearl grey evening gown, decorated by a much favored triangular shaped panel at the front, sides and back, which are fully hand beaded and fringed, low sat hat also hand beaded, silk velvet wrap decorated with fox cuffs and collar, gloves, necklace and earrings. To create this set I have used 3 contrasting hues, particularly popular at this period of time; pearl grey, forest green and violet. Edition of 1/2. Not Available.



The Swan (Hollywood Stars)

This set's influence comes from the fashion of early 30's and inspired by the Hollywood Star Constance Bennet, for during the early 30's Bennet was a paragon of movie chic, one of the classiest beauties to grace the silver screen. Indeed, she was like some silvery comet who streaked through life with dancing speed. The Swan includes pure silk shiny satin cire' gown fully beaded, trimmed wrap, hat, purse, earrings and gloves - all-white colored which was the top of preferred colors of that period. The gown and wrap are lined with pure silk. Beads are 3 hues rainbow shinning, pale green, pale sky blue and pink.  
Edition of 1/3. Not Av

## Indian Summer Gown Collection 2000



Titanic Green Tea Gown

This set is an exact replica of Titanic Green Tea Gown. It is created by using swampy green satin silk covered with five layers of embroidered tulle on the skirt and one layer on top and under sleeves. Lace is handmade in collage technique. The set also includes detachable orange velvet belt with a large flower - dahlia in the same hue as the belt, necklace and earrings with real gold beads.

Edition of 4. Not Available.



Titanic Flying Dress

This set is an exact replica of Titanic Flying Dress. It includes blue velvet jacket of the same hue as the shining natural silk collar and cuffs, while on the right hand it's a one solid piece and the left one consists of three parts. Sharply angled jacket is lined with natural silk and decorated with a bow in floral design. Sleeveless dress with off-white embroidered top has shining silk double skirt with draped top layer and detachable draped belt. Off-white gloves are decorated with very tiny pale blue embroidered flowers. Also includes antique embroidered purse and shawl, consisting of two layers of organza with the top layer embroidered gold thread and lower pure silk level decorated with long fringe. Also includes real gold beaded earrings and necklace.

Edition of 4. Not Available.



Indian Summer in New York

This is a walking costume inspired by the fashion of 1912-14 in elegant grey granite color. Short lined jacket is decorated with plaited silk. Fitted dress designed in subtle yellow and grey tones and consists of top decorated with yellow lace on grey cover with long plated sleeves, very fitted triangular skirt accented with ocher red lace up on the slit that rises up to the waist line and hand beaded hem with very tiny granite hue beads. Lower part of the skirt is decorated with golden ocher lace on puffed satin cover. Also includes golden ocher hat, dark grey fox stole decorated with deep yellow bows and dark grey crystals, antique embroidered silk and beads purse and earrings. Edition of 2. Not Available.



Black and Yellow Suspense

This is a visiting set from the fashion of 1912. Consists of fitted long gown, olive green silk velvet coat, black mink muff and soft canary yellow veiled hat, earrings and necklace. Short sleeves wrap, pure silk matching color lined decorated with black mink and black silk lace. Lined pale ochre silk gown with plated front part of the skirt is oval shaped while rest is created with 19th century black tulle and silk lace. It is trimmed with antique olive green silk. Front of the gown is hand beaded with black crystals. Edition of 3. Not Available.



Pearl Games

Pearl Games is a walking costume designed in grey pearl de crepe (pure silk). It consist of double layered skirt, triangular shaped embroidered upper level and very fitted lower skirt finished with pleated frill. Embroidered top blouse coat with accented collar, waist blouse in pale silk tulle, pleated in front, mink stole, large hat with ostrich feather. Also includes pleated band and silver earrings. Edition of 2. Not Available.





Sunny Yellow Bow

This is a walking dress in pearl de Paris inspired by the fashion of 1912. It includes surplice top with full white floral embroidered vest, baby orange yellow ribbon with bunch at front and two bias straps with fringe. Overskirt is decorated with heavy pale grey lace and underskirt bias striped bands and pleated frill. This set also includes large pearl grey veiled hat decorated with ostrich feather, grey mink stole with long fringe and silver earrings. Edition of 2. Not Available.



Irish Cream Angles,  
1912

This is a morning walking dress in cream and pearl grey striped Jap silk. It is well fitted and cut a la' Raphael with dotted net part and lacy collar. High waist line is decorated with crushed pale green silk velvet belt with a flower in the same hue. It has bias reversed striped overskirt finished with hand beaded trim in cream tiny beads and well fitted lower skirt in ruffled cream satin with flounce. This set includes pale green ribboned purse with cream lace, large hat in cream straw trimmed with gray band, large bow to match and feather, earrings and off-white curly hair stole with rich grey trim. Edition of 3. Not Available.



Japanese Calligraphy

This walking costume in bright vermillion satin consist from long lined jacket with asymmetrical fastening, baggy on the waist, well fitted on the hips, decorated with embroidered braid, black lacquered leather bands and black mink. Back and front are richly hand-embroidered with vermillion and black tiny beads and crystals. Also, this set includes well fitted skirt in the same fabric with black crystals imitating buttons and black sparkling gauze blouse with tiny fringe on necklace. Small black hat is finished with wide orange crushed silk velvet band and orange and black feathers. Japanese Calligraphy also includes earrings and necklace. Edition of 3. Not Available.



Thin Golden Line, 1922

This is a lined evening gown of pale pinkish orange crepe de chine, consisting of a sleeveless, draped, well fitted bodice with black velvet and ochre gold straps and a long bell-shaped bias cut skirt, trimmed with wide band of mink. Short jacket in black crepe de satin with golden ochre trim has matching color bands and is decorated with oriental design hand-embroidery in tiny vermillion and orange beads. Jacket has long sleeves trimmed with rich mink cuffs. This set also includes small hat in matching color; oval decoration on the crown and black and orange feathers, ostrich fan and a jewelry set with necklace and earrings. Edition of 3. Not Available.



Noon Poppies

This afternoon walking set includes lined sleeveless long waisted dress in yellow grey and deep madder red silk with well fitted short skirt, cut from eight panels and decorated with chiffon diamond shaped hand embroidered insertions. Lined short silk coat is decorated with lace in the same hue, mink and floral trim, glossy red Indian silk. Noon Poppies in a Field also includes purse, short red gloves, large silk de soie printed shawl, matching set of jewelry and a hat, decorated with bright red ribbon, flowers and a feather.

Edition of 4. Not Available.



Charleston's Days

This evening gown was inspired by the fashion of 1926. It consists of deep turquoise cut silk chiffon dress with silver grey silk de soie sleeveless under-dress, finished with handkerchief shaped hem. Both parts of the dress are richly embroidered with tiny crystal beads. Lined wrap of broche' band is egg shaped in the back, has grey turquoise velvet on wide sleeves and back and is decorated with hand beaded copper colored beads and mohair trim. Also includes long turquoise gloves, deep worn hat with a golden rosette and a feather, long necklace and earrings. Edition of 3. Not Available.





Blue Modern, 1926

This set was inspired by the avant-garde artists that aspired to bridge the gap between art and life in the beginning of 20th century. Blue Modern walking set consists of lined, sleeveless crepe de china dress with baggy long waisted bodice with pleated overskirt and well fitted short lower skirt. Short, well fitted coat in cerulean blue crepe with draped velour collar insertion in the same hue, jabot shaped facings and baby blue, magenta, gold ochre and black bands pointed decoration on the back. Also includes magenta Parisian crepe purse, black embroidered gloves, umber deep worn hat, necklace and earrings. Edition of 4. Not Available.



Violet Blues

This set was inspired by the fashion of prewar Europe in 1935. It includes deep purple pure silk Parisian crepe well fitted long gown, shorter in front and longer in the back with large well fitted, shoulder to elbow sleeves. Front, back and sides are all hand embroidered with a matching metallic thread and beads design. This set also includes lined wrap from silk brocade with golden thread, decorated with fringe and black mink, hand embroidered with crystals, velvet purse, velvet turban, earrings and necklace. Edition of 3. Not Available.



Iris Princess

This set consists of lined mauve crepe de china sleeveless gown with asymmetrical neckline, deep opened at front and back, bell shaped full skirt with spiral asymmetrical length. Embroidered top is finished with draped belt in the same fabric with large flower and carried over in a long dark silver embroidered scarf in the front. Iris Princess also includes wrap in mauve silk and linen cloth with satin large collar, decorated with velvet bands on the facings and finished with mohair trim, small dark silver embroidered hat, decorated with a large flower and a brush, purse, semitransparent ball gloves, necklace and earrings. Top and bottom of the gown, wrap, and purse are all hand-embroidered and hand-beaded. Edition of 3. Not Available.



Grey Rose Fantasy

This set was inspired by the tragic fashion of the 40's. Grey Rose Fantasy set consist of lined draped crepe de china gown, hand-embroidered with metallic thread and beads, lined wrap in plated silk organza. The gown is finished with a rich fox collar, dyed in the same grey-pink hue and decorated with a large bow in the lace, small hand-embroidered purse, gloves, real silver earrings and necklace and small veiled hat.  
Edition of 2

## Madra 2001 'First Confession' Collection



Gold Fish

First Madra Lord's evening gown on the way to the top to crush the competitors and become the first. Set consists of a well fitted, strapless bodice completely embroidered with ocher, brown, burned orange and black sequences, imitating fish scales. A full length slit skirt has scalloped seam in georgette fishtail circular hem on the knee level. 'Gold Fish' includes an asymmetric neckline, dyed fox, small black sequences embroidered hat with a black feather and a high sparkle, black, perforated plastic decoration, large scales net stockings, an envelope-shaped velvet purse, earrings, necklace and ring with black beads and amber crystals. Circa 1941.

Edition of 2. Not Available.



Best Of The Best

'Best of The Best' is a magical and flimsy, light silver-gray evening gown, molded onto the body like a wet cloth, and accented by an exaggerated large silver fox beret and a rich, dark-plum evening coat, which altogether seem like an antique Greece sculpture. 'Best Of The Best' consists of a full length semi-transparent chain silk-jersey, body color lined evening gown with deep neckline and well fitted with intricate seaming, evening wrap of mirror velvet with sweetheart neckline, draped waist length at front with a jeweled fastening, puff at the shouldered and tight at wrists long sleeves and full skirt, silver gray purse; long gloves, inserted by silver gray dotted tulle; silver and rhinestones necklace and earrings. Circa 1940.

Edition of 3. Not Available.



"Lime Light" is a Day Wear outfit. It consists of a well-fitted figure-hugging tricot, lime color dress and black, shining caracul fur with the moiré' effect, seven-eighths-length edge-to-edge collarless coat with square padded shoulders and full-length wide inset sleeves. Lined day-wear dress has asymmetrical, sparkling black booklet yoke, hip-level seams incorporated pockets, and three-quarter-length inset fitted sleeves with black sparkle, pointed cuffs. The set also includes small brimless, black felt hat with a lime color decoration; black lacquer stretch leather gauntlet gloves and matching handbag, stockings, earrings, bracelet and necklace with lime color crystals. Circa 1947.

Lime Light

Edition of 3. Not Available.



First Confession

Set consists of red madder wool crepe, semi-fitted, double breasted coat and heavy silk day-wear dress in the same shade. The dramatic combination of red and black is emphasized by drops of crème color on the pompons; tiny pearl buttons on the side-fastening of the dress, small black and red hat, lacy gloves and crème with black spots suede hand-bag. Dramatic feeling that 'First Confession' communicates is also accentuated by asymmetrically curved, black Persian lamb trimmed lines on the right side of the coat and on the inset sleeves. Black with red, embroidered side spit stockings, small hat with an uneven brim, lacy gloves, handbag, necklace and small jeweled crosses as earrings complete this set. Circa 1939.

Edition of 3. Not Available.



Sailing in Capri

'Sailing in Capri' consists of white and navy blue striped, bias-cut lined, silk dress with sweet-heart low neckline. The set is complemented by white, knee-length, collarless, edge-to-edge fastening coat with plain panels on the front and the back of flared skirt, square on the back and pointed on front blue decoration with white tiny ribbon, imitating sailor collar. Navy-blue, white stitched gauntlet gloves; net stockings; hand bag; tied and knotted under the chin straw hat with bias-cut, with navy blue trim on the wide stiff brim; earrings and necklace complete 'Sailing in Capri'. Circa 1938.

Edition of 3. Not Available.



One Summer Day At  
The French Riviera...

Beach-wear set designed with a combination of white, dark navy-blue, grass-green and Naples yellow colors. It consists of white crepe-de-Parisian silk, lined dress with deep V-shaped neckline, flared skirt; crepe lined hip-length cape with scarf-shaped pointed edges collar, wide, three-quarter-length sleeves; navy-blue hat with uneven brim and green ribbon trim; small matching handbag; stockings; navy-blue, green and yellow color gauntlet glove, decorated with tiny buttons slit; white ceramic earrings and necklace. Circa 1937.  
Edition of 3. Not Available.



Lunch at the Cabaret

'Lunch at the Cabaret' includes: Lined, burned sienna dotted rayon day-wear dress with a V-shaped neckline; meeting point of curved seam, running from high waist line at pleated sides, asymmetrical, curved hip yoke and pleated side panel on the flared skirt. Lined, embroidered from one side short bolero style, edge-to-edge jacket with three-quarter-length inset sleeves and padded shoulders; crushed straw colored with black, curled brim and shallow crown felt hat; bright gold velvet gauntlet gloves; black with bright gold velvet angles handbag; matching color feather stole; earrings and necklace with matte amber. Circa 1937.  
Edition of 3. Not Available.

## Tyler 'Evergreen Breeze' 2001 Collection



Safari in the Serengeti

Daytime set consists of the lined wool-crepe cream collarless edge to edge with fastening on the belt. 'Safari in the Serengeti' includes cream color silk-crepe fitted on the waist dress, double-breasted with asymmetrical big suede lapel imitating zebra skin from the right side, and decorated by brown suede buttoned bands on the left side. Full length inset sleeves and flared skirt with inserted brown silk triangles decorated by suede buttoned bands on the top. Set is amplified by brown and crème felt, wide brimmed hat, black stockings and matching zebra skin with cream purse. Circa 1941.

Edition of 2. Not Available.



Weekend in Roma

Circa 1953. The 'Weekend in Roma' set consist of lined dress, beaded front and well fitted chocolate-brown silk white-spotted skirt with rust wide velvet buckled belt on the waist line. Set includes also lined chocolate-brown white-spotted jacket with sweetheart-shaped neckline and large shawl collar decorated with two tiny tea-roses, asymmetrical front panel draped low the waist line with jeweled brooch. Completes the set net purse, with chocolate-brown spotted trim and white net, hat, gold chain, gloves, stockings and narrow brown and rust muff. Edition of 2. Not Available.

Daywear set includes lined silk dress with multicolored outside flower print, semi-fitted on the body with short kimono sleeves and deep narrow neckline with jeweled buckle on the neck in front and triangle shaped décolletage on the back. Completes this lovely set short, lined royal blue with navy blue inserted trim, bolero style lined jacket of Parisian silk-crepe. 'Granada Sunset' also includes gloves, necklace with jeweled pale blue tiny butterfly and earrings, purse and finished with floral design trim and flowers hat. Circa 1954.

Edition of 3. Not Available.

### Granada Sunset

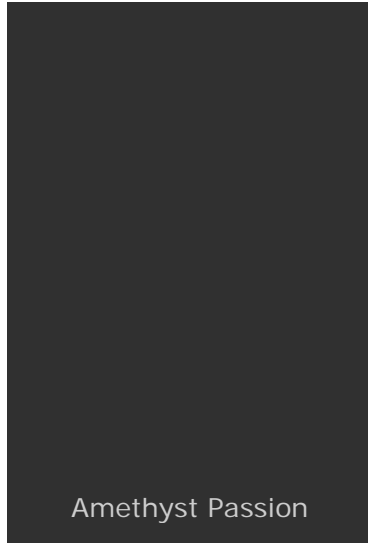


Circa 1941. Consists of evergreen crepe marquee gown. Bodice with floral brocade pattern has deep V-shaped neckline decorated with darker shade inserted. Back of skirt is decorated with two circular-cut panels under the waistline. Set includes faux matching color wrap with two large bronze jeweled buttons on the suede fastening, straw hat, long opera gloves, purse and bronze color asymmetrically shaped necklace and earrings. Edition of 3. Not Available.

### Evergreen Breeze

Set includes navy-blue and white dress and summer coat. Top of the bodice consists of four curved parts; upper navy-blue, white and maize-yellow dotted with elbow length fitted semi-set-in sleeves. Dress and coat are threaded on the curved seams with navy-blue suede and silk maize-yellow bands. Completes the set small brimless white velvet, veiled hat with navy blue ostrich feather, suede purse, necklace of silver and maize-yellow rhinestones, and navy blue with white gloves. Circa 1953. Edition of 3. Not Available.

### Moonlight Serenade



Amethyst Passion

This daywear set consists of wool-tweed two pieces classic business suit with well-fitted jacket and tight bias-cut skirt. Big wing-shape collar, cuffs, flap pockets, slits on the jacket and high slit on the skirt are decorated by amethyst color suede and tiny crème and black lacquered leather braids. Completes 'Amethyst Passion' set silver-grey mink cape, hat, matching suede purse, black gloves and stockings, amethyst crystals and silver cross on the edge necklace. Circa 1949.  
Edition of 4. Not Available.



## Historical Costume Collection 2001



Madame de Maintenon

Madame de Maintenon - a powerful Sun King's mistress. The skirt is richly patterned and trimmed, the bodice is fully decorated, and sleeves reach only as far as the elbows where the lace frills of the chemise appear. Ensemble has typical of the time detail A'la Fontange head-dress, a construction of silk ribbons, that provide a background for the pearls artfully arranged on the forehead and hanging down at the back - a faint reflection of the vast quantities of hair in the men's wigs. An example of the enormous curly periwig is seen in the Louis XIV Ensemble below. As in many historical costumes here, I also have incorporated antique laces and fabrics. All of the three historical scenes in this Collection were created to match each couple, by combining complimentary colors, fabrics and proportions. Edition of 2. Not Available.



Louis XIV- The Sun King

The look of this ensemble was inspired by one of the most powerful fashion innovators in history - Louis XIV The Sun King. Louis XIV set reflects men's fashion of the end of XVII (1690), when men wore brighter and more colorful clothes than women, and like my other historical costumes was created with a maximum of precision. This set consists of a long lined pink velvet knee-length waisted coat (the so-called justaucorps a' brevet). Skirt of the jacket is gathered into wide vertical box-pleats on the sides and back, that creates rich fullness. Elbow-sleeves with large cuffs, pocket flaps, lined pink velvet knee breeches. Breeches and coat are richly decorated with real silver-thread embroidery and silver lace. Completes the set a dagger and bright white knee-length stockings. Edition of 3. Not Available.



Emily

This ensemble was inspired by one of my favorite literature characters, Miss Emily Sedly - Osborne from Vanity Fair by William Tekkerey. She symbolizes timeless, truly feminine woman, who embodies the saying that "Strength of a woman is in her weakness". Ensemble is completed by a small hand bag, which historically has made its first appearance in 1830's; tiny necklace with a jeweled cross on the edge and earrings. Hair dress was a very important detail of the look and is created as a mass of heavy curls on each side and a high wired crown. Edition of 2. Not Available.



Lt. George Osborne

'Lt. George Osborne' is a great example of 1830's London's dandies. During those romantic times dandies paid as much attention to their looks as did women and sometimes more, which is reflected in this stylish ensemble. Set includes lined coat tailored to fit closely in the bodice, suede lapels, and narrow waist accented hips reached by wide box-pleats. Also lined maze yellow trousers with strap sewn under the instep, tightly fitted sleeveless lined waist-coat brocade with tiny white horses; double breasted waist -coat has long shawl collar. To complete the Lt. Osborne ensemble there is muslin short with tiny pleats and a'la Bairoon jeweled cravat of navy blue silk with maze yellow patterns and of course, black top hat.

Edition of 2. Not Available.

This Ensemble was inspired by the wildly passionate Fandango folk dance of 19th century Spain, that can still be met nowadays, like the legendary bullfighters and is designed in the Spain's favorite color - black, together in a dramatic combination of rich scale of reds: from blood red and fiery orange to hot magenta and contrasted with vibrant, deep, grass green.

Edition of 2. Not Available.

Fandango



Torrero

Bullfighting, breathtaking and cruel has long been Spain's most authentic form of entertainment. The costume of Matadors hasn't changed since 1880 and is still worn today. Torrero costume consists of a canary green Parisian crepe, tight short jacket with epaulettes and knee-length breeches. Jacket and breeches are fully embroidered on the front. Narrow draped sash bias cut organza in ruby red color forms a tight belt; scarlet and black cape, muleta, with which matador decoys the bull, is wide and knee-length. Torrero Ensemble also includes silk shirt with a jeweled button, black stone jeweled cross on a black metal chain, one matching earring, a dagger and a Matador hat.

Edition of 3. Not Available.



Tropical Mint

The beauty of deep emerald green - base color of this ensemble is emphasized by a black spotted in white flounce on the jacket's neckline, same patterned gloves, large feathers on the hat with an addition of burnt sienna and a detachable stole and cuffs on the knee-length coat. Harmonious combination of warm, golden shaded Violet Waters skin tone together with brilliant emerald green creates an a feeling of delicious tropical fruits or wild exotic plants.

Edition of 3. Not Available.



Magnolia

This entire ensemble reflects the fashion of 1938 and the exotic influences of Spanish motifs. The original combination in red-wine shade and large ecru-colored dots is contrasted by a plain frill on the skirt and tied belt at back and ecru-color wrap trimmed with matching fur. Magnolia Set includes a lined silk de soie, evening ground-level sleeveless gown. Long theatrical gloves, venetian velvet small purse on a tiny black metal chain with jeweled buckle and full set of jewelry with rubies framed in black metal; earrings, two bracelets and necklace complete this delightful set.

Edition of 2. Not Available.



Eternal Song of  
Barcelona

OOAK only, auctioned for US September 11th Fund at Tulsa Gene Doll Convention. This Centerpiece consists of repainted and sealed with varnish "Mood Music" Gene with detachable wig wearing a gown, inspired by Spanish Folk Music and Dance and veil on a high hairdo. She is dancing on an architectural monument with stairs and column. (Architectural design, accessories and shoes created by Evgenia Seagall)

Edition of 1. Not Available.

### White Tuxedo

Circa 1995. This design inspired by the Golden 40s and reappeared for present time by using the leather instead of fabric and more modern proportions.

Evening suite of 3 pieces is done of winter white leather and emphasized with golden decoration. Well-fitted lined, single breasted tailcoat with two buttons in the fastening has tight full sleeves with inserted, pointed cuffs, pointed yoke shawl collar, decorated with tiny golden rivets and stars. Tailcoat is decorated on the back with tiny golden chain on the waist- line under the deep slit. Set includes also sleeveless bodice with golden chained straps and pointed edges on the front panel, detached round collar with bow and a huge golden cross, well-fitted lined trousers with lace fastenings on the each side, from waistline to hip-level has curly shape under the knees, golden chain wide pointed belt, earrings-one of star shape and other of long tiny chain, matching color top-hat, with wide shiny silk ribbon and golden-beige color trim on the brims, big chained bracelet. **Limited edition of 3. Available 1. Price \$460.**









Copyright © Helen S. Rostrom 2003



## Passage

Circa 1919. During the second decade of the twentieth century saw a considerable simplification in female dress. The slim line grew in favor, and though lace continued to be popular, but fabrics with strong color contrasts and straight simple lines began to predominate. The set „Passage“ consists of coat-length daytime dress and coat. The dress of white Parisian silk lined semi-fitted bodice and straight skirt are covered by black and white lacy overdress with scalloped edged asymmetric opening with low waistline underlined with black-velvet belt with white decoration. The bodice in the opening is hand-beaded with white round and cylindrical shiny beads. The calf-length skirt with vertical lacy opening has inserted black detail on the bottom. Set includes also lined white Italian silk velvet wrap with criss-cross details, running from the back to the shoulders and forming pointed scarves on the front, fastened with two large jeweled clasps and black 11 buttons on the back slit. The scarves and a hem are full hand-beaded shaping the fringe. Set includes also black and white hand-beaded large beret, black leather purse with stealing silver decorations, matching earrings and black stockings.

**Limited edition of 3. Not Available. Price \$440.**









This set consists of an ecru color, pure silk gown. Full skirt with three tucks decorated with lacy medallions, lacy gathered frill and two deep different colors tucks on the hem. Blouse waist with lacy opening has double capes over bishop sleeves with a gathered lacy frill. Set completes brown crushed pointed belt decorated with a silk bow, in same color and a large hat of brown velvet. Circa 1905. Edition of 1 of 1.







This design consists of a light fawn color pure silk princess-cut gown with partly stitched plaits, lacy pointed yoke, and elbow level puffy sleeves with two gathered lacy frills. Gown is decorated with inserted bands and details with rosettes in matching color. Set also includes a small felt hat of fawn and ecru color trimmed with rosettes and large ostrich feathers. Circa 1905. Edition of 1 of 1.









This beautiful set consists of granite color antique embroidered silk crepe with vertical tucked front panel, inserted waist line detail, waist blouse with square opening and yoke of embroidered silk and high collar of lace. Shaped sleeves with vertical tucks trimmed as the rest of the gown by plain granite color satin piping and tiny pearl buttons. Silk yoke is completed with burnt-orange color silk ribbon, which is drawn and finished with a loop. Set also includes a shaped, large burnt-orange felt hat with grey brim and grey ostrich tips and plumes. Circa 1909. Edition of 1 of 1.

### "Carmen"

Inspired by Spanish favorite Fashion palette - dramatic combination of fire-red with black color. Set consists of the lined full length evening gown with well-fitted upper part of the black tulle embroidered by fire-red ruche ribbons, with decorative curved seam from under arm to center front, repeated as hip yoke of black silk velvet and deep sweat-heart neckline. Circular overskirt of fire-red silk-chiffon with uneven hem, longer at back with slight train is hand-embroidered on the hem by red and black beads forming the pattern of the upper part's bodice embroidery. Full-length flared under skirt made from black bias-cut silk georgette. Set enriches by the lined red silk velvet under knee-level wrap with semi-fitted bodice, full-length sleeves, narrow and draped on the wrist-line. The deep opened on the neckline wrap with carve-shaped hem trimmed with the red fox and decorated by the big jeweled black buttons on the sleeves, fastening and under hips-level front and back. Set includes also a big black straw hat with the ostrich black and red feathers, black jeweled purse with gold metallic clasp, black metal with rubies rhinestones necklace, matching earrings, and big gold metal cross on the gold chain.

**Circa 1939. Limited Edition 1/2. N/A. Price \$490.**



### "Sparkling Gray"

Set consists of a lined very tight full-length evening gown of smoky gray pure silk shantung with asymmetric low scalloped neckline at front and V shaped scalloped décolletage at back; shaped seam under bust to waist-level with inserted French embroidery left parts of front and back of the bodice, very tight full-length sleeves and lower part of skirt, repeating the decorative line of the bodice. Gown is adorned with hand-embroidered granite color cylindrical-shape beads bands, running in diagonal lines, finished with long tassels of tiny granite color beads. Set is enriched by smoky gray knee-level rabbit-fur coat with shawl collar, small purse of gray organza on a tiny silver frame, matching necklace, earrings and small fitted hat of puffy smoky gray organza with tall gathered flounce.

**Circa 1938. Limited Edition 1/2. N/A. Price \$470.**



### "Walking Costume."

Circa 1880. Stylish walking costume consists of flowered and plain lined full-length of brocaded heavy silk gown, which is very tight and constricting.

Hip-level bodice is designed from five panels with pointed central part of pale-gray shirred silk sateen, round lacy red-wine yoke with puffed-out trimming and same decorations at the high neckline and elbow-length sleeves with stitched claret color silk ribbon and pointed inserted ornament of pale-gray silk embroidery. Well-fitted skirt with under hip-level shirred detail of claret-color velvet, bordered with puffed-out trimming and pleated pale-gray flounce is finished with three rows of granite-gray plain silk-shantung, red-wine velvet ribbons and red-wine silk-de-soie flounce. Back of the gown is completed with short train of flowered brocaded silk with horizontal folds and vertical pleats, decorated with large gathered red-wine color crepe-de-china bias-cut bow. Set also includes Lady's lined wrap of silver-gray natural baby-karakul fur, bordered at the opening with silver-gray mink and inserted red-wine color central panel at the back adorned with velvet ribbon of matching color with pale-gray pearl drop. This walking costume completes a chained handle lined muff of silver-gray mink edged by three tiny tails, dark-silver necklace, matching earrings and wealed red-wine felt hat with gray brim and feathers.

**Limited Edition 1/3. N/A. Price \$420.**







## Historical Costume Collection 2001



Madame de Maintenon

Madame de Maintenon - a powerful Sun King's mistress. The skirt is richly patterned and trimmed, the bodice is fully decorated, and sleeves reach only as far as the elbows where the lace frills of the chemise appear. Ensemble has typical of the time detail A'la Fontanne head-dress, a construction of silk ribbons, that provide a background for the pearls artfully arranged on the forehead and hanging down at the back - a faint reflection of the vast quantities of hair in the men's wigs. An example of the enormous curly periwig is seen in the Louis XIV Ensemble below. As in many historical costumes here, I also have incorporated antique laces and fabrics. All of the three historical scenes in this Collection were created to match each couple, by combining complimentary colors, fabrics and proportions. Edition of 2. Not Available.



Louis XIV- The Sun King

The look of this ensemble was inspired by one of the most powerful fashion innovators in history - Louis XIV The Sun King. Louis XIV set reflects men's fashion of the end of XVII (1690), when men wore brighter and more colorful clothes than women, and like my other historical costumes was created with a maximum of precision. This set consists of a long lined pink velvet knee-length waisted coat (the so-called justaucorps a' brevet). Skirt of the jacket is gathered into wide vertical box-pleats on the sides and back, that creates rich fullness. Elbow-sleeves with large cuffs, pocket flaps, lined pink velvet knee breeches. Breeches and coat are richly decorated with real silver-thread embroidery and silver lace. Completes the set a dagger and bright white knee-length stockings. Edition of 3. Not Available.





Emily

This ensemble was inspired by one of my favorite literature characters, Miss Emily Sedly - Osborne from Vanity Fair by William Tekkerey. She symbolizes timeless, truly feminine woman, who embodies the saying that "Strength of a woman is in her weakness". Ensemble is completed by a small hand bag, which historically has made its first appearance in 1830's; tiny necklace with a jeweled cross on the edge and earrings. Hair dress was a very important detail of the look and is created as a mass of heavy curls on each side and a high wired crown. Edition of 2. Not Available.



Lt. George Osborne

'Lt. George Osborne' is a great example of 1830's London's dandies. During those romantic times dandies paid as much attention to their looks as did women and sometimes more, which is reflected in this stylish ensemble. Set includes lined coat tailored to fit closely in the bodice, suede lapels, and narrow waist accented hips reached by wide box-pleats. Also lined maze yellow trousers with strap sewn under the instep, tightly fitted sleeveless lined waist-coat brocade with tiny white horses; double breasted waist -coat has long shawl collar. To complete the Lt. Osborne ensemble there is muslin short with tiny pleats and a la Biron jeweled cravat of navy blue silk with maze yellow patterns and of course, black top hat.

Edition of 2. Not Available.

This Ensemble was inspired by the wildly passionate Fandango folk dance of 19th century Spain, that can still be met now days, like the legendary bullfighters and is designed in the Spain's favorite color - black, together in a dramatic combination of rich scale of reds: from blood red and fiery orange to hot magenta and contrasted with vibrant, deep, grass green.

Edition of 2. Not Available.

Fandango



Torrero

Bullfighting, breathtaking and cruel has long been Spain's most authentic form of entertainment. The costume of Matadors hasn't changed since 1880 and is still worn today. Torrero costume consists of a canary green Parisian crepe, tight short jacket with epaulettes and knee-length breeches. Jacket and breeches are fully embroidered on the front. Narrow draped sash bias cut organza in ruby red color forms a tight belt; scarlet and black cape, e muleta, with which matador decoys the bull, is wide and knee-length. Torrero Ensemble also includes silk shirt with a jeweled button, black stone jeweled cross on a black metal chain, one matching earring, a dagger and a Matador hat.

Edition of 3. Not Available.



Tropical Mint

The beauty of deep emerald green - base color of this ensemble is emphasized by a black spotted in white flounce on the jacket's neckline, same patterned gloves, large feathers on the hat with an addition of burnt sienna and a detachable stole and cuffs on the knee-length coat. Harmonious combination of warm, golden shaded Violet Waters skin tone together with brilliant emerald green creates an a feeling of delicious tropical fruits or wild exotic plants.

Edition of 3. Not Available.



Magnolia

This entire ensemble reflects the fashion of 1938 and the exotic influences of Spanish motifs. The original combination in red-wine shade and large ecru-colored dots is contrasted by a plain frill on the skirt and tied belt at back and ecru-color wrap trimmed with matching fur. Magnolia Set includes a lined silk de soie, evening ground-level sleeveless gown, long theatrical gloves, venetian velvet small purse on a tiny black metal chain with jeweled buckle and full set of jewelry with rubies framed in black metal; earrings, two bracelets and necklace complete this delightful set.

Edition of 2. Not Available.



Eternal Song of  
Barcelona

OOAK only, auctioned for US September 11th Fund at Tulsa Gene Doll Convention. This Centerpiece consists of repainted and sealed with varnish "Mood Music" Gene with detachable wig wearing a gown, inspired by Spanish Folk Music and Dance and veil on a high hairdo. She is dancing on an architectural monument with stairs and column. (Architectural design, accessories and shoes created by Evgenia Seagall)

Edition of 1. Not Available.

## Madra 2001 'First Confession' Collection



Gold Fish

First Madra Lord's evening gown on the way to the top to crush the competitors and become the first. Set consists of a well fitted, strapless bodice completely embroidered with ocher, brown, burned orange and black sequences, imitating fish scales. A full length slit skirt has scalloped seam in georgette fishtail circular hem on the knee level. 'Gold Fish' includes an asymmetric neckline, dyed fox, small black sequences embroidered hat with a black feather and a high sparkle, black, perforated plastic decoration, large scales net stockings, an envelope-shaped velvet purse, earrings, necklace and ring with black beads and amber crystals. Circa 1941.

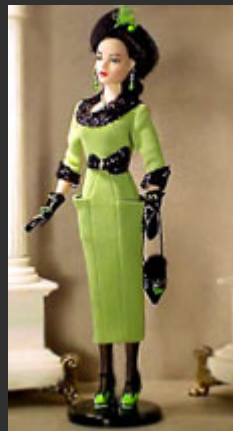
Edition of 2. Not Available.



Best Of The Best

'Best of The Best' is a magical and flimsy, light silver-gray evening gown, molded onto the body like a wet cloth, and accented by an exaggerated large silver fox beret and a rich, dark-plum evening coat, which altogether seem like an antique Greece sculpture. 'Best Of The Best' consists of a full length semi-transparent chain silk-jersey, body color lined evening gown with deep neckline and well fitted with intricate seaming, evening wrap of mirror velvet with sweetheart neckline, draped waist length at front with a jeweled fastening, puff at the shouldered and tight at wrists long sleeves and full skirt, silver gray purse; long gloves, inserted by silver gray dotted tulle; silver and rhinestones necklace and earrings. Circa 1940.

Edition of 3. Not Available.



"Lime Light" is a Day Wear outfit. It consists of a well-fitted figure-hugging tricot, lime color dress and black, shining caracul fur with the moiré' effect, seven-eighths-length edge-to-edge collarless coat with square padded shoulders and full-length wide inset sleeves. Lined day-wear dress has asymmetrical, sparkling black booklet yoke, hip-level seams incorporated pockets, and three-quarter-length inset fitted sleeves with black sparkle, pointed cuffs. The set also includes small brimless, black felt hat with a lime color decoration; black lacquer stretch leather gauntlet gloves and matching handbag, stockings, earrings, bracelet and necklace with lime color crystals. Circa 1947.



Lime Light

Edition of 3. Not Available.



First Confession

Set consists of red madder wool crepe, semi-fitted, double breasted coat and heavy silk day-wear dress in the same shade. The dramatic combination of red and black is emphasized by drops of crème color on the pompons; tiny pearl buttons on the side-fastening of the dress, small black and red hat, lacy gloves and crème with black spots suede hand-bag. Dramatic feeling that 'First Confession' communicates is also accentuated by asymmetrically curved, black Persian lamb trimmed lines on the right side of the coat and on the inset sleeves. Black with red, embroidered side spit stockings, small hat with an uneven brim, lacy gloves, handbag, necklace and small jeweled crosses as earrings complete this set. Circa 1939.

Edition of 3. Not Available.



Sailing in Capri

'Sailing in Capri' consists of white and navy blue striped, bias-cut lined, silk dress with sweet-heart low neckline. The set is complemented by white, knee-length, collarless, edge-to-edge fastening coat with plain panels on the front and the back of flared skirt, square on the back and pointed on front blue decoration with white tiny ribbon, imitating sailor collar. Navy-blue, white stitched gauntlet gloves; net stockings; hand bag; tied and knotted under the chin straw hat with bias-cut, with navy blue trim on the wide stiff brim; earrings and necklace complete 'Sailing in Capri'. Circa 1938.

Edition of 3. Not Available.



One Summer Day At  
The French Riviera...

Beach-wear set designed with a combination of white, dark navy-blue, grass-green and Naples yellow colors. It consists of white crepe-de-Parisian silk, lined dress with deep V-shaped neckline, flared skirt; crepe lined hip-length cape with scarf-shaped pointed edges collar, wide, three-quarter-length sleeves; navy-blue hat with uneven brim and green ribbon trim; small matching handbag; stockings; navy-blue, green and yellow color gauntlet glove, decorated with tiny buttons slit; white ceramic earrings and necklace. Circa 1937.  
Edition of 3. Not Available.



Lunch at the Cabaret

'Lunch at the Cabaret' includes: Lined, burned sienna dotted rayon day-wear dress with a V-shaped neckline; meeting point of curved seam, running from high waist line at pleated sides, asymmetrical, curved hip yoke and pleated side panel on the flared skirt. Lined, embroidered from one side short bolero style, edge-to-edge jacket with three-quarter-length inset sleeves and padded shoulders; crushed straw colored with black, curled brim and shallow crown felt hat; bright gold velvet gauntlet gloves; black with bright gold velvet angles handbag; matching color feather stole; earrings and necklace with matte amber. Circa 1937.  
Edition of 3. Not Available.

## Indian Summer Gown Collection 2000



Titanic Green Tea Gown

This set is an exact replica of Titanic Green Tea Gown. It is created by using swampy green satin silk covered with five layers of embroidered tulle on the skirt and one layer on top and under sleeves. Lace is handmade in collage technique. The set also includes detachable orange velvet belt with a large flower - dahlia in the same hue as the belt, necklace and earrings with real gold beads. Edition of 4. Not Available.



Titanic Flying Dress

This set is an exact replica of Titanic Flying Dress. It includes blue velvet jacket of the same hue as the shining natural silk collar and cuffs, while on the right hand it's a one solid piece and the left one consists of three parts. Sharply angled jacket is lined with natural silk and decorated with a bow in floral design. Sleeveless dress with off-white embroidered top has shining silk double skirt with draped top layer and detachable draped belt. Off-white gloves are decorated with very tiny pale blue embroidered flowers. Also includes antique embroidered purse and shawl, consisting of two layers of organza with the top layer embroidered gold thread and lower pure silk level decorated with long fringe. Also includes real gold beaded earrings and necklace. Edition of 4. Not Available.



Indian Summer in New York

This is a walking costume inspired by the fashion of 1912-14 in elegant grey granite color. Short lined jacket is decorated with plaited silk. Fitted dress designed in subtle yellow and grey tones and consists of top decorated with yellow lace on grey cover with long plated sleeves, very fitted triangular skirt accented with ochre red lace up on the slit that rises up to the waist line and hand beaded hem with very tiny granite hue beads. Lower part of the skirt is decorated with golden ochre lace on puffed satin cover. Also includes golden ochre hat, dark grey fox stole decorated with deep yellow bows and dark grey crystals, antique embroidered silk and beads purse and earrings. Edition of 2. Not Available.



Black and Yellow Suspense

This is a visiting set from the fashion of 1912. Consists of fitted long gown, olive green silk velvet coat, black mink muff and soft canary yellow veiled hat, earrings and necklace. Short sleeves wrap, pure silk matching color lined decorated with black mink and black silk lace. Lined pale ochre silk gown with plated front part of the skirt with oval shaped while rest is created with 19th century black tulle and silk lace. It is trimmed with antique olive green silk. Front of the gown is hand beaded with black crystals. Edition of 3. Not Available.



Pearl Games

Pearl Games is a walking costume designed in grey pearl de crepe (pure silk). It consists of double layered skirt, triangular shaped embroidered upper level and very fitted lower skirt finished with pleated frill. Embroidered top blouse coat with accented collar, waist blouse in pale silk tulle, pleated in front, mink stole, large hat with ostrich feather. Also includes pleated band and silver earrings. Edition of 2. Not Available.



Sunny Yellow Bow

This is a walking dress in pearl de Paris inspired by the fashion of 1912. It includes surplice top with full white floral embroidered vest, baby orange yellow ribbon with bunch at front and two bias straps with fringe. Overskirt is decorated with heavy pale grey lace and underskirt bias striped bands and pleated frill. This set also includes large pearl grey veiled hat decorated with ostrich feather, grey mink stole with long fringe and silver earrings. Edition of 2. Not Available.



Irish Cream Angles,  
1912

This is a morning walking dress in cream and pearl grey striped Jap silk. It is well fitted and cut a la' Raphael with dotted net part and lacy collar. High waist line is decorated with crushed pale green silk velvet belt with a flower in the same hue. It has bias reversed striped overskirt finished with hand beaded trim in cream tiny beads and well fitted lower skirt in ruffled cream satin with flounce. This set includes pale green ribboned purse with cream lace, large hat in cream straw trimmed with gray band, large bow to match and feather, earrings and off-white curly hair stole with trim. Edition of 3. Not Available.



Japanese Calligraphy

This walking costume in bright vermillion satin consists from long lined jacket with asymmetrical fastening, baggy on the waist, well fitted on the hips, decorated with embroidered braid, black lacquered leather bands and black mink. Back and front are richly hand-embroidered with vermillion and black tiny beads and crystals. Also, this set includes well fitted skirt in the same fabric with black crystals imitating buttons and black sparkling gauze blouse with tiny fringe on necklace. Small black hat is finished with wide orange crushed silk velvet band and orange and black feathers. Japanese Calligraphy also includes earrings and necklace. Edition of 3. Not Available.



Thin Golden Line, 1922

This is a lined evening gown of pale pinkish orange crepe de chine, consisting of a sleeveless, draped, well fitted bodice with black velvet and ochre gold straps and a long bell-shaped bias cut skirt, trimmed with wide band of mink. Short jacket in black crepe de satin with golden ochre trim has matching color bands and is decorated with oriental design hand-embroidery in tiny vermillion and orange beads. Jacket has long sleeves trimmed with rich mink cuffs. This set also includes small hat in matching color; oval decoration on the crown and black and orange feathers, ostrich fan and a jewelry set with necklace and earrings. Edition of 3. Not Available.



Noon Poppies

This afternoon walking set includes lined sleeves long waisted dress in yellow grey and deep madder red silk with well fitted short skirt, cut from eight panels and decorated with chiffon diamond shaped hand embroidered insertions. Lined short silk coat is decorated with lace in the same hue, mink and floral trim, glossy red Indian silk. Noon Poppies in a Field also includes purse, short red gloves, large silk de soie printed shawl, matching set of jewelry and a hat, decorated with bright red ribbon, flowers and a feather. Edition of 4. Not Available.



Charlstone's Days

This evening gown was inspired by the fashion of 1926. It consists of deep turquoise cut silk chiffon dress with silver grey silk de soie sleeveless under-dress, finished with handkerchief shaped hem. Both parts of the dress are richly embroidered with tiny crystal beads. Lined wrap of broche' band is egg shaped in the back, has grey turquoise velvet on wide sleeves and back and is decorated with hand beaded copper colored beads. Also includes long turquoise gloves, deep worn hat with a golden rosette and a feather, long necklace and earrings. Edition of 3. Not Available.





Blue Modern, 1926

This set was inspired by the avant-garde artists that aspired to bridge the gap between art and life in the beginning of 20th century. Blue Modern walking set consists of lined, sleeveless crepe de china dress with baggy long waisted bodice with pleated overskirt and well fitted short lower skirt. Short, well fitted coat in cerulean blue crepe with draped velour collar insertion in the same hue, jabot shaped facings and baby blue, magenta, gold ochre and black bands pointed decoration on the back. Also includes magenta Parisian crepe purse, black embroidered gloves, umber deep worn hat, necklace and earrings. Edition of 4. Not Available.



Violet Blues

This set was inspired by the fashion of prewar Europe in 1935. It includes deep purple pure silk Parisian crepe well fitted long gown, shorter in front and longer in the back with large well fitted, shoulder to elbow sleeves. Front, back and sides are all hand embroidered with a matching metallic thread and beads design. This set also includes lined wrap from silk brocade with golden thread, decorated with fringe and black mink, hand embroidered with crystals, velvet purse, velvet turban, earrings and necklace. Edition of 3. Not Available.



Iris Princess

This set consists of lined mauve crepe de china sleeveless gown with asymmetrical neckline, deep opened at front and back, bell shaped full skirt with spiral asymmetrical length. Embroidered top is finished with draped belt in the same fabric with large flower and carried over in a long dark silver embroidered scarf in the front. Iris Princess also includes wrap in mauve silk and linen cloth with satin large collar, decorated with velvet bands on the facings and finished with mohair trim, small dark silver embroidered hat, decorated with a large flower and a brush, purse, semitransparent ball gloves, necklace and earrings. Top and bottom of the gown, wrap, and purse are all hand-embroidered and hand-beaded. Edition of 3. Not Available.



Grey Rose Fantasy

This set was inspired by the tragic fashion of the 40's. Grey Rose Fantasy set consists of lined draped crepe de china gown, hand-embroidered with metallic thread and beads, lined wrap in plated silk organza. The gown is finished with a rich fox collar, dyed in the same grey-pink hue and decorated with a large bow in the lace, small hand-embroidered purse, gloves, real silver earrings and necklace and small veiled hat. Edition of 2. Not Available.



Spice

Spice set is influenced by the fashion of the late twenties, when the skirts reached minimum. They began at the hip-line, only covering the knees. This set is cut with bias front panel considerably longer than sides and back. Both lined jacket and the dress are decorated with black fringe. This set includes hand beaded afternoon dress; very low hat, purse, gloves, long string of beads, earrings and black ostrich boa. To complete the 20s image set is shown on Gene with a very characteristic hairdo, when hair was parted on the side, cut into an "Eton" crop. Limited Edition of 1/3. Not Available.



Emerald Wings

This set's influence comes from the Fashion of early 40's. Emerald Wings includes light emerald embroidered organza blouse, deep emerald ballet length fitted high-waisted skirt, wide folded jacket with fox trim, fox detachable collar decorated with flowers, bias cut scarf, hat, gloves, purse, necklace and earrings. Edition of 1/3. Not Available.



This outfit is influenced by the fashion of early 40s. Beige Treasure includes light pinkish-beige crepe bias cut very fitted afternoon dress with draped hand beaded wrap decorated with long mink collar in same hue, small hat with 3 dimensional decoration, purse, stockings and earrings. Edition of 1/4. Not Available.

## Beige Treasure



Variation on Cubism

Fashion of the late 20's, inspired by cubism, reflecting new movement of design, painting, sculpture and architecture. It runs through fashion too, and is expressed through geometrical prints and lines using strong contrasting colors. From the spring of 1924: skirts were short, from near knee-high to ankle length, waists no longer fluctuated, the bust and hips obliterated, the neckline rivaled the low V, all silhouettes were definitely slim. Variation on Cubism set includes pure silk off-white afternoon dress, geometrical design off-white and brown tiny check printed jacket, low sat off-white hat, triangular brown velvet shawl with mink trim, purse, earrings and necklace.

Edition of 1/3. Not Available.



Extravaganza

This outfit reflects fashion of late 30's, and particularly 1938 and was inspired by Claudette Colbert. She was the first Hollywood star to have a department store mannequin created in her likeness while off screen being one of the leading fashion arbiters. Extravaganza set includes chrome green colored crepe silk fitted jacket with antique silver trim and welled buttons, gathered in front of bias panel skirt, veiled extravagant hat, earrings, purse and short on the back and long in front fur cape.

Edition of 1/3. Not Available.



Tea Rose

This set reflects fashion of the late 30's and is inspired by the Hollywood star Joanne Crawford which is mostly remembered from the golden times. This gown is a reproduction of a real photograph with Joanne posing at her home in Brentwood. This set includes crepe de china hand beaded lined sleeveless and tightly fitted on hips and forming a bell shaped skirt with draped back evening gown. Same hue silk wrap, trimmed with fox, lacey purse, lacey gloves, and ostrich decorated hat, matching the fox fur hue, necklace and earrings. All set is designed in a light pinkish brown color. Edition of 1/3. Not Available.



Spring Passion

Spring Passion reflects the fashion of 40's. This gorgeous set includes ultra modern heavy silk bias cut gown consisting of French hand beaded embroidered bodice, bias cut close-fitting skirt with a diagonal mate and shiny stripes and hand beaded draped fringed chiffon of the same color, organza hat, hand beaded purse, gloves, earrings, necklace and ostrich boa. Edition of 1/3. Not Available.



Domino

Domino is influenced by fashion of 20's, "Vamp" stile. This set includes: lined pearl grey evening gown, decorated by a much favored triangular shaped panel at the front, sides and back, which are fully hand beaded and fringed, low sat hat also hand beaded, silk velvet wrap decorated with fox cuffs and collar, gloves, necklace and earrings. To create this set I have used 3 contrasting hues, particularly popular at this period of time; pearl grey, forest green and violet. Edition of 1/2. Not Available.



The Swan (Hollywood Stars)

This set's influence comes from the fashion of early 30's and inspired by the Hollywood Star Constance Bennet, for during the early 30's Bennet was a paragon of movie chic, one of the classiest beauties to grace the silver screen. Indeed, she was like some silvery comet who streaked through life with dancing speed. The Swan includes pure silk shiny satin cire' gown fully beaded, trimmed wrap, hat, purse, earrings and gloves - all-white colored which was the top of preferred colors of that period. The gown and wrap are lined with pure silk. Beads are 3 hues rainbow shinning, pale green, pale sky blue and pink.  
Edition of 1/3. Not Available.



## Gene Collection of 1999



Shakespearean Gene

### Breast Cancer Auction 2000.

Prototype for this Gene is Elizabeth the I from a famous painting of Gheeraerts the Youngest, dating 1592. Coral red used with gold and white was a very popular combination and here the Queen's dress is also embroidered with real silver thread and fully hand-beaded. Gene is repainted, with a natural red-hair detachable wig, the gown consisting of an open antique silk robe in a "bell shape" created with a metal hoop worn round the hips.



Black & White Abstraction

### World War 2 Period. **Black & White Abstraction** won 3d prize at the 4th Annual Gene Convention, 1999.

This elegantly stylish set includes: bias white lined silk gown with a small dotted top, decorated with draped silk scarf with white tiny dots on black background, short crepe satin line opened coat used on mate side with glossy large collar and rich mink cuffs on the short sleeves, b&w dots gloves, purse, petite veiled hat, pearl necklace and earrings.

Edition of 1/3. Not Available.



Dreamscape

Dreamscape is influenced by fashion of 20s, the Jazz age. Set includes: evening gown from chiffon, sky blue taffeta with two floating panels and sky blue floating fringe. Dreamscape is decorated with silk embroidery, hat, purse, ostrich boa, gloves, earrings and necklace.  
Edition 1/2. Not Available.



Meeting with Hemingway

Imagine hot summer day in the 30's, prewar Paris, cozy cafe and Gene sitting with a small cup of espresso, talking with Hemingway, curious crowds of people on the streets.....This set includes sleeveless silk de soie red dress with tiny white dots, short silk lined jacket, wide white gloves, purse, necklace, earrings and of course, necessary at the time stole of mink...  
Edition of 1/2. Not Available.



Purple Romance

Fashion of the 20's, Titanic epoch. Decorated with mink, long jacket and tight fitted skirt, lacy blouse of same shade, purse, hat, earrings and necklace. Pure silk.  
Edition 1/3. Not Available.



Lavender Mink

Again Titanic epoch, Europe of 20s...Set includes silk tight-fitted jacket, hand embroidered, very tight silk skirt, decorated with silver mink, tiny pleated (goffre) organza blouse same lavender shade, hat, purse, earrings and necklace.

Edition 1/2. Not Available.



Midnight in Rio

A sample from the late 20s. Metallic thread, tight fitting gown with 2 flounces, starting underneath the lower black velvet flounce, which creates a mermaid silhouette. This gown includes evening gown, silk velvet wrap all hand embroidered, decorated with mink, pleated organza hat, gloves, beaded purse jewelry set.

Edition 1/3. Not Available.



Graphica

Influence of the late 30's, when a more varied, more picturesque and more extravagant fashion scene would be impossible to imagine. Graphica includes printed black crepe drooping gown with off-white trimming, O.W. crepe opened coat with black silk embroidery and decorated with fox sleeves, hat, gloves, purse, pearl earrings and necklace.

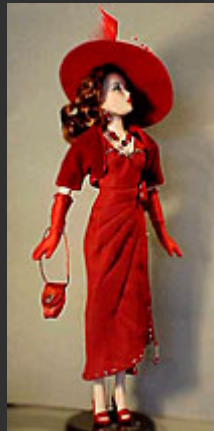
Edition 1/3. Not Available.



Rendezvous

Fashion of the 40's. This set includes silk de soie drapery gown in navy blue on black background with tiny red dots, French silk velvet cape lined with pure navy blue embroidered silk, velvet silk purse, veiled hat, gloves, earrings and lace.

Edition 1/3. Not Available.



Last Tango

Influenced by the late 40's, to be exact-1947. Last Tango includes drapery pure silk beaded gown, beaded French silk velvet bolero, gloves, purse, and hat, rich Russian mink muff with two tails, silver earrings and necklace.

Edition 1/2. Not Available.



Blue-Red Contrast

Early 40's, pre-world war 2. Red-Blue includes bias silk & wool dress, short crepe, pleated lined coat, velvet purse, gloves, veiled hat, necklace and earrings.

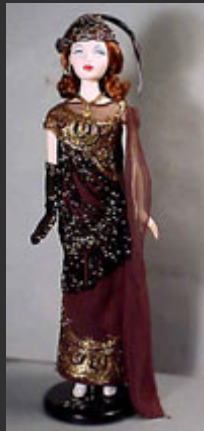
Edition 1/2. Not Available.



Power Of Beauty

Late 40's. Power of beauty is a bias hand beaded stretch silk gown with drapery on the waist in front and on the back, very rich fox stole, velvet purse, veiled hat, beaded gloves, silver necklace, and earrings with real semi-precious stones.

Edition 1/2. Not Available.



Sparkle Bronze

Sparkle Bronze's inspiration is beginning of the 20's - ankle-length, shapeless soft dresses with diagonal line below the hips and usually decorated by fringe and rich embroidery. Set includes evening hand beaded gown, finished with French antique gold embroidery, hand beaded fringe and hand beaded antique silk chiffon scarf's, bronze knitted, small fitted hat, purse, gloves, silk velvet wrap with lace clasp, earrings and necklace.

Edition of 1/2. Not Available.



Coral Smile

This gown is influenced by fashion of later 20's, which ignored the bust, hips and waist and concentrated the interest on the hemline, uneven and emphasized by handkerchief points.

This set includes coral colored satin bodice with light chiffon, rich skirt with handkerchief pointed shape. There is a strong diagonal cut-on-the-cross on bodice, line below the hips and panels of chiffon skirt. Hand embroidered with tiny coral and antique gold beads and black crystals. On top, there is a black wrap with a sharp corner tail and high goffre collar, fitting tightly line of the neck and hips. Also includes purse, necklace, bracelet and earrings, gloves and a small hat to complete the image.

Edition of 1/3. Not Available.



Softer Than Rose

Influence of mid 20's. Includes evening gown consisting of a cut-on-the-cross pale pink /ultra mode/ with flared godets, flattered and swayed pink silk satin, skirt, hand beaded in the same pink shade. Also, set has a triangle shape pure silk wrap finished by silk lace and faux color purse, small close fitting veiled hat, earring and necklace. Edition of 1/2. Not Available.



